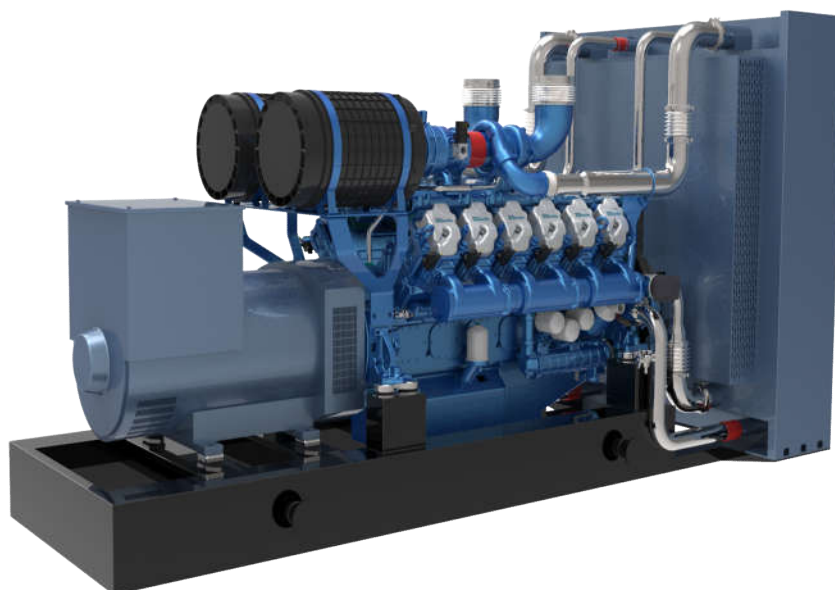


Biogas Generator Set Data Sheet (01-01-2018)

Rated 400kWel, Biogas



Picture for Reference Only

Gas Generator Set Model:	TBD500BG	Gas Engine Model:	12M26D605E300NG	Alternator Model:	Leroy Somer LSA47.2M7
---------------------------------	----------	--------------------------	-----------------	--------------------------	--------------------------

50Hz 1500 r.p.m	3 Phase 4 Wires	Power Factor: Cos ϕ = 0.8	Emissions Standard	N/A
---------------------------	---------------------------	--	---------------------------	-----

RATINGS	Prime Power (PRP)		Standby Power (LTP)		Rated Current (A)	Remarks
	kW	kVA	kW	kVA	Amps	
Voltage (V)						
380/220	400	500	N/A	N/A	759.7	
400/230	400	500	N/A	N/A	721.7	
415/240	400	500	N/A	N/A	695.6	
440/254	400	500	N/A	N/A	656.1	

Conditions and Defintions:

1) Engine output data under ISO8528/1, ISO3046/1, BS5541/1, DIN6271 conditions.

Genset General Specifications

Gas genset model	TBD500BG	Frequency (Hz)	50
Gas engine model	12M26D605E300NG	Speed (rpm)	1500
Electrical output (kW)	400	Speed regulating rate	0-5% Adjustable
Electrical output (kVA)	500	Open type dimension (L×W×H) (mm)	4100×2300×2400
Fuel	Biogas	Net weight (kg)	7000

Engine Specifications

Manufacturer	Baudouin (France)	Direction of rotation	Counter clockwise from flywheel
Model	12M26D605E300NG	Induction system	Turbocharged & Intercooled
Mechanical power	460 kWm	Combustion type	Spark ignition
Speed	1500rpm	Cooling method	Water cooled
Configuration	V-type	Speed governor	Electronic
Number of cylinders	12	Oil Consumption	≤0.6 g/kW.h
Cycle	4 stroke	Heat consumption 100% load	11-12MJ/kW.H
Cylinder type	Wet	Oil grade	15W40-CF4 or above grade
Bore / Stroke	150/150 mm	Starting method	24V DC motor
Displacement	31.8L		
Compression ratio	11.5:1		

Alternator Specifications

50HZ/1500R.P.M

Manufacture / Brand	Leroy-somer	Prime Output Power	400kW/500kVA
Model	LSA47.2M7	Insulation class	H
AVR Model	R250	Voltage regulation	± 0,5 %
Coupling / Bearing	Direct /Single Bearing	Total harmonic TGH / THC	at no load<1,5 %-on load<2%
Phase	3 Phase	Wave form : NEMA = TIF - (*)	< 50
Power Factor	Cos φ = 0.8	Wave form : I.E.C. = THF - (*)	< 2 %
Winding pitch - Code	2/3 - (N° 6)	Altitude	≤ 1000 m
Drip Proof	IP 23	Overspeed	2250 min -1
Excitation	Shunt		

Control Panel



- Deepsea 7320 controller
- Digital control panel
- Volts, current, frequency, rpm (instruments)
- Genset running hours
- Battery voltage and charging
- Over speed pre-alarm & shutdown
- High water temp. pre-alarm & shutdown
- Low oil pressure pre-alarm & shutdown
- Low voltage pre-alarm & shutdown
- Overcurrent pre-alarm & shutdown

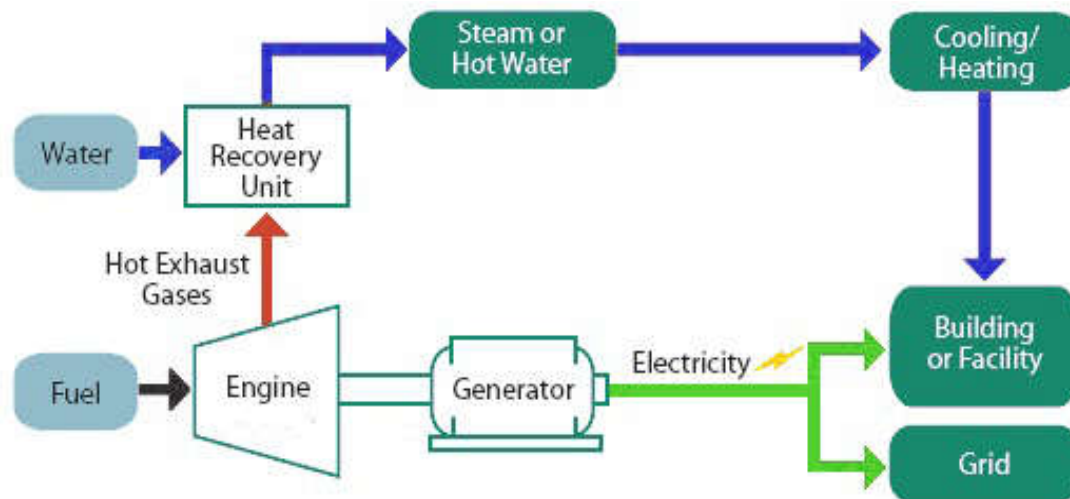
Standard Features

- High efficient water cooled gas engine with radiator
- Brushless alternators (Class H, with AVR.)
- Heavy duty rubber anti-vibration mountings
- Starter batteries and connecting cables
- Separate engine-drive battery charging alternator
- Industrial silencer for open type generator sets
- Circuit breaker - 3 pole (MCCB)
- Low coolant level sensor
- Oil filter - Air filter
- Fully welded steel baseframe
- Ignition system
- Gas train: mainly Italy Madas gas pressure regulator & gas filter, pressure gauge, electromagnetic valve and fire arrestor and other connection components
- Wiring with IEC standard
- Factory test certificate
- Operation & Maintenance manual & Diagrams
- Worldwide product / Technical support

Optional

- Automatic Transfer Switch (ATS)
- Radiator or cooling tower
- Water heater for severe cold weather
- Lub-oil heater for severe cold weather
- Silent containerised
- Residential silencer
- Panel for auto synchronization with Mains
- Extra air filters for time-maintenance
- Automatic oil supply system
- Breaker cabinet
- Extra oil filters for time-maintenance
- Parallel cabinet
- Full range of attachments and options available for alternator
- Flame arrestor in gas train
- Desulfurization system
- Gas pretreatment system
- Dehydration system
- Genset Commissioning / Testing on site

Combined Heat and Power Systems (Optional)



We offer Combined Cooling Heating and Power (CHP and CCHP) packages for our gas generator sets. It can recover 75%-90% combined electrical and thermal efficiency, resulting in major reductions in your overall energy costs. In the past years we have supplied CHP systems to Germany, Russia, Indonesia etc. We have the experience and capabilities to meet your total energy requirements.

Warranty

The goods of Tide Power Technology are under warranty against defects in materials and workmanship for period 1 year or 1000 hours operation time whichever come first from the date of delivery to the end user (except the damageable spare parts of genset caused by incorrect man-made operation), and that the aforementioned warranty for the same token is back up by the engine & alternator manufactures and their global distributors.